



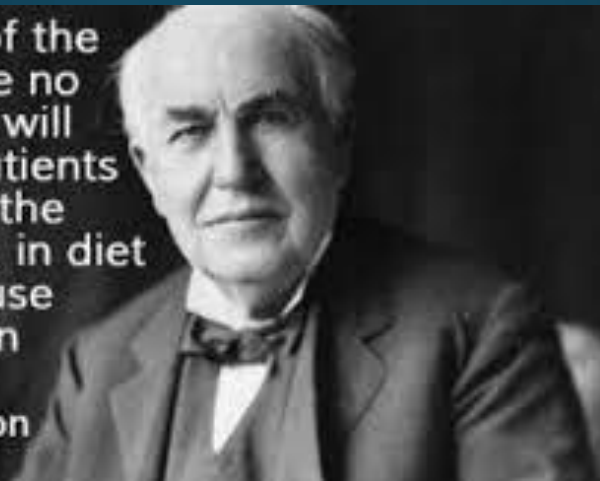
Conor Geraghty MVB Cert DHH
**Prevention is Better than Cure:
Herd Health Management**

Geraghty & Neary Veterinary, Mountbellew, Co. Galway



Prevention is better than cure?

"The doctor of the future will give no medicine, but will interest his patients in the care of the human frame, in diet and in the cause and prevention of disease."
~ Thomas Edison



Geraghty & Neary Veterinary, Mountbellew, Co. Galway



Geraghty & Neary Veterinary, Mountbellew, Co. Galway



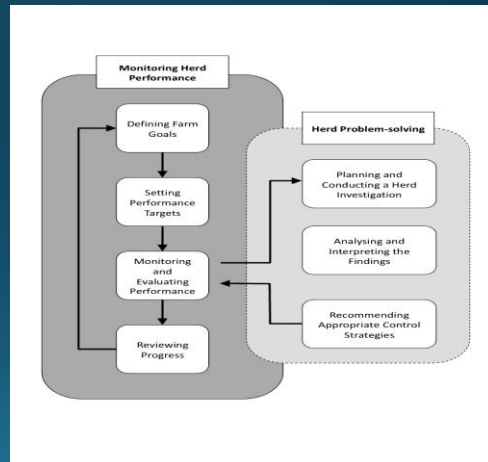
Herd HEALTH

Geraghty & Neary Veterinary, Mountbellew, Co. Galway



What is Herd Health Management?

- Method
- Systematic analysis of data
- Regular clinical observations
- Optimise animal health & welfare
- Improve farm profitability

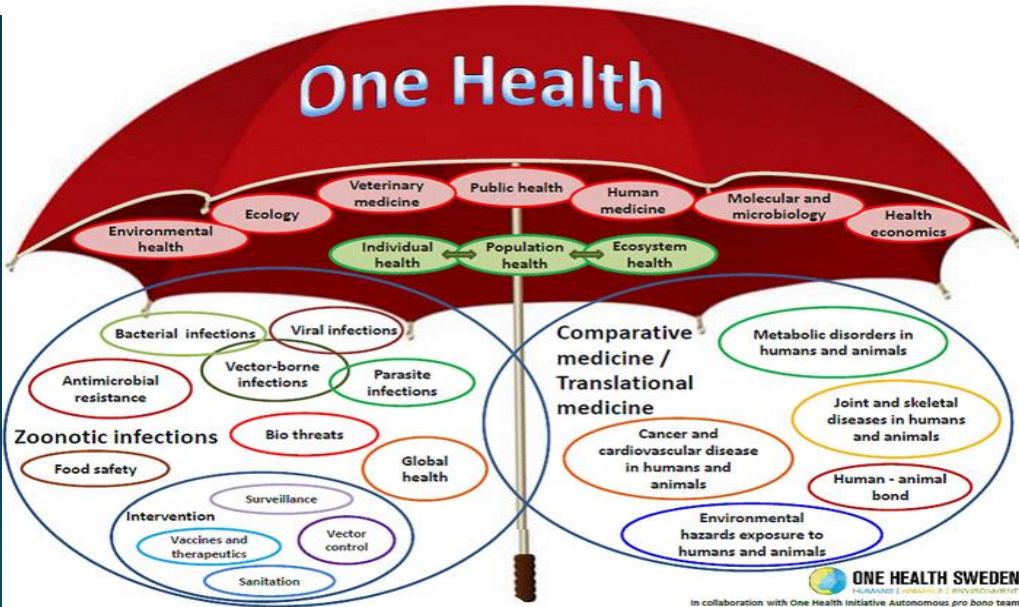


Geraghty & Neary Veterinary, Mountbellew, Co. Galway





Geraghty & Neary Veterinary, Mountbellew, Co. Galway



Geraghty & Neary Veterinary, Mountbellew, Co. Galway

Herd Health Management

Reduction in

**Disease
Prevention**

**Mortality
Morbidity
Treatment
Labour
Antimicrobial Use
Carbon footprint**

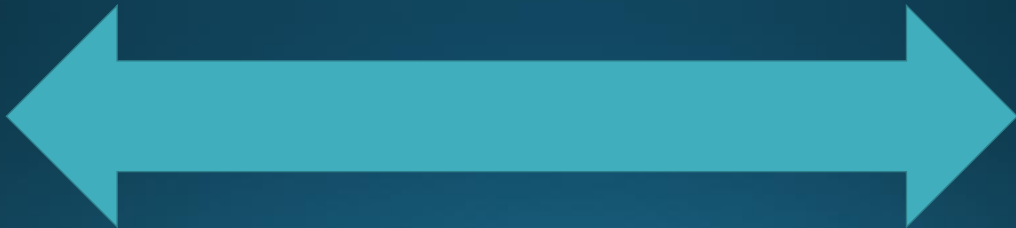
**Maximise Output
Profit
Animal Welfare
Food Safety
Consumer Confidence**

Geraghty & Neary Veterinary, Mountbellew, Co. Galway



Our Approach

Individual issue



Herd Health

Geraghty & Neary Veterinary, Mountbellew, Co. Galway





Animal Health Toolkit

- Database & Traceability
 - AIM
 - AHCS
 - ICBF
- Private Veterinary Practitioners
 - 100% CVE
 - 55% further training
 - >20% QQI level 9
 - UK
- Animal Health Ireland
- Teagasc
- RDP



Geraghty & Neary Veterinary, Mountbellew, Co. Galway



On Farm Delivery

- Peer reviewed science
- Best practice
- Actions on farm
- How?



Geraghty & Neary Veterinary, Mountbellew, Co. Galway



Penetration

- BVD programme
- Website
- Leaflets
- Information meetings
- Discussion groups
 - 34,000 farmers
- PVPs
 - 100% of farmers



Geraghty & Neary Veterinary, Mountbellew, Co. Galway



Progress

- AHI
 - Johnes VRAMP
 - CellCheck Workshops
 - TASAH investigations
- RDP
 - Knowledge transfer
- National Animal Health Strategy



Geraghty & Neary Veterinary, Mountbellew, Co. Galway

Farm Specific Risk Assessment

- Every farm is different
- Johnes VRAMP
 - 93% very satisfied
 - Scientific content & advice
- Moorepark
 - Calf health spin off



Geraghty & Neary Veterinary, Mountbellew, Co. Galway

3830

KUDAHL ET AL.

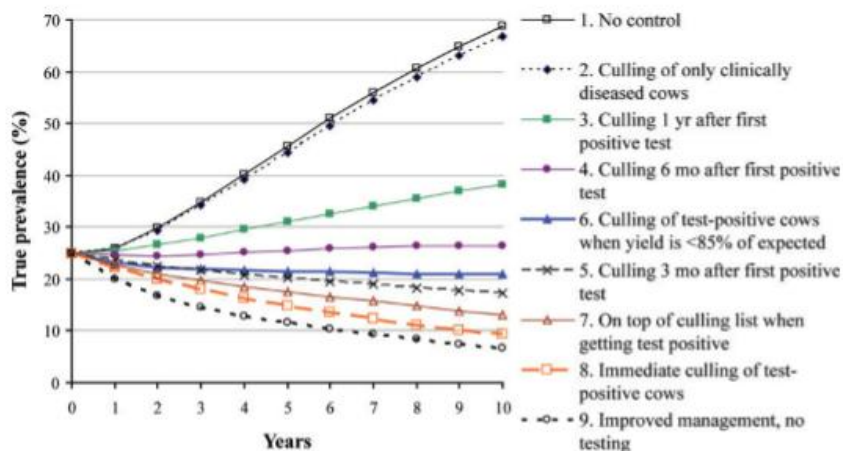


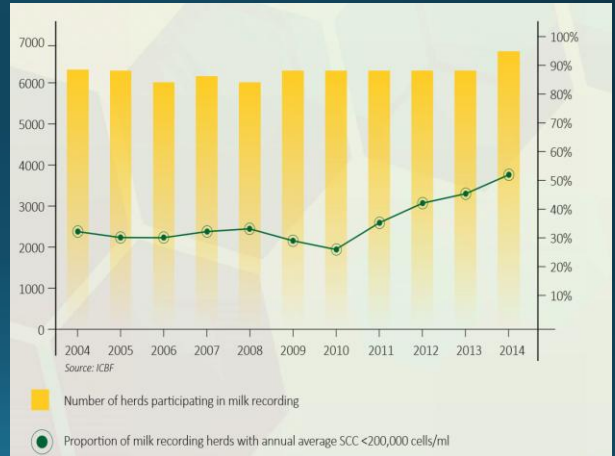
Figure 1. Simulated effects on true herd-prevalence of different culling strategies to control paratuberculosis in dairy herds with average reproduction management (heat detection rate 38%). Culling strategies with decreasing time intervals from testing ELISA-positive the first time until culling (strategies 2-8) were compared with no control (strategy 1) and improved management of transmission routes (strategy 9). Color version available in the online PDF.

Geraghty & Neary Veterinary, Mountbellew, Co. Galway



CellCheck

- Real progress
- Target 70% <200k cell/ml by 2020
- Achievable
- Selective DCT
 - Mastimmentor
- Buy in



Geraghty & Neary Veterinary, Mountbellew, Co. Galway



Beef HealthCheck

- Value for money report 2011
- Veterinary collected data
- Reports
 - Farmers
 - Vets
- Added value

Beef HealthCheck Report

Supplier Details:

- SUPPLIER: A. FARMER
- HERD NO: A128456
- DATE OF SLAUGHTER: 01/01/2016
- SAC/DRP: BRANCH EYE

TAG	SEX	AGE (mths)	CARCASE D ₂	LIVER SCORE	LUNG SCORE
IE 12 34567 B 0001	E	20	330	1	3
IE 12 34567 B 0002	C	22	360	3 / 8	1
IE 12 34567 B 0003	D	40	400	2	1
IE 12 34567 B 0004	B	44	500	1	1
IE 12 34567 B 0005	E	39	340	1	2
IE 12 34567 B 0006	C	20	350	1	4
IE 12 34567 B 0007	D	36	410	4	1

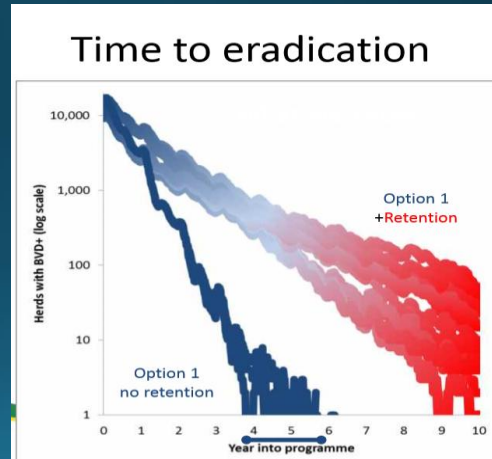
Legend: A Farmer Details, B Animal Details, C Liver and lung score

Geraghty & Neary Veterinary, Mountbellew, Co. Galway



BVD

- Scientific advice
- Significant progress
- TASAH investigations
 - Epidemiology
 - Biosecurity
- Lessons



Geraghty & Neary Veterinary, Mountbellew, Co. Galway



Geraghty & Neary Veterinary, Mountbellew, Co. Galway



Knowledge Transfer

- Animal Health Measures
- On-farm risk assessments
- 22,000 farmers
- PVP delivered meetings
- KT approved national events



Geraghty & Neary Veterinary, Mountbellew, Co. Galway



Farmer Training

- FarmSkills
 - Lameness
 - Calf rearing
 - Fertility
 - Lambing
- Practice level
 - Disbudding
 - Nutrition
 - Calf health
 - Antimicrobial use



Geraghty & Neary Veterinary, Mountbellew, Co. Galway

Farmer Training

- Flock health clubs
 - Popular
 - Partnership with industry
- Topics
 - Lameness
 - Abortion
 - Biosecurity protocols
 - Anthelmintic resistance
 - Ram assessment



Geraghty & Neary Veterinary, Mountbellew, Co. Galway

Antimicrobial Resistance

- WHO
- EFSA
- Use of antimicrobials
- Reduction in use
- Achievable



Geraghty & Neary Veterinary, Mountbellew, Co. Galway

What drives antimicrobial use?

- Intensive production
- Compensation
 - Overcrowding
 - Poor management
 - Lack of planning
- Availability
- Costs



Geraghty & Neary Veterinary, Mountbellew, Co. Galway

Solutions

- Veterinary footfall on farms
 - Real not nominal
- Risk assessment
- Targets
- Accountability
- Vaccination/Prevention
- Training



Geraghty & Neary Veterinary, Mountbellew, Co. Galway

Solutions

- Legislation
- Investment
 - Reach the non engaged
 - PVPs
- Profit monitor
- Track record
- Vet – farmer link
 - Data



Geraghty & Neary Veterinary, Mountbellew, Co. Galway

Anthelmintic Resistance

- 50% treatments ineffective
 - *Sheahan et al. 2014*
- Problems on farm
- KT groups
- Dual actives



Geraghty & Neary Veterinary, Mountbellew, Co. Galway

Veterinary Service

- Cost/Value?
- Mind-set change
- Better farm programme
- AHI
- Animal remedies/ medicines
- Link / partnership



Geraghty & Neary Veterinary, Mountbellew, Co. Galway

Herd Health Management

Reduction in

Disease

Prevention

Mortality

Morbidity

Treatment

Labour

Antimicrobial Use

Carbon footprint

Maximise Output

Profit

Animal Welfare

Food Safety

Consumer Confidence

Geraghty & Neary Veterinary, Mountbellew, Co. Galway

Agri-food Industry – Vet's Role

- Maximise output
 - Safe food
 - Responsible antimicrobial use
 - High animal welfare standards
- Disease reduction
 - Risk assessment
 - Planning
 - Prevention
 - Training
- Partnership with stakeholders



Geraghty & Neary Veterinary, Mountbellew, Co. Galway

Thank You



Geraghty & Neary Veterinary, Mountbellew, Co. Galway